

ADVANCED SITE SUPPORT EQUIPMENT

HEAT, LIGHT, POWER, AND SURVEILLANCE PRODUCTS

2022 PORTFOLIO



V1.1

Leading edge equipment technology.



SAFETY THAW ///
DESIGNED FOR RUGGED CONDITIONS

HYBRIDLIGHT
SOLUTIONS LLC.

www.hybridlightsolutions.com

www.safetythaw.com

OUR PHILOSOPHY

Our goal is to be the most dependable provider of site support equipment solutions in the industries we serve, committed to lean manufacturing and paying special attention to the details.



Our product line has been created to help you achieve your goals.



We have a dedication to quality, continuous improvement, and service for our customers

We are dedicated to quality, continuous improvement and service for our customers. You can buy a piece of equipment from anyone, but knowing that we're passionate about providing a high level of product quality, after-sale, and customer service and support.

We have several quality control systems that allow us to maintain high levels of QC and QA during our production process. In addition, our machines and equipment is ready for use across most regions within North America.

- 1 How can we build a distinctive solution by designing equipment through the lens of application performance?
- 2 Selling our products is simply the beginning; to

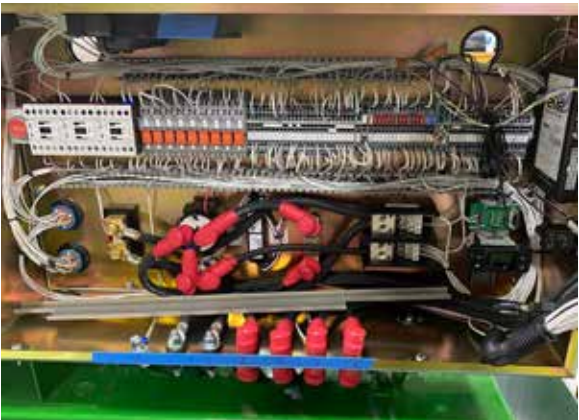
set ourselves apart, we focus on giving the best level of product and customer support - we won't stop until our clients are successful.

3 Our experience in the business allows us to lead our product development in a different way. When we say "continuous improvement," we mean it. We consistently challenge ourselves and our team to better understand customer needs and difficulties.

Please help us understand more about your application requirement.

CONTROL OF ALL PRODUCTION PHASES.

TOP COMPONENTS



EFFICIENT ASSEMBLY WITH ATTENTION TO THE DETAILS



A MIND SET OF QUALITY FIRST



MADE IN USA



Designed, engineered, and tested by a team from the US and Canada

HLS MODEL 230

The HLS Model 200 was built from the ground up to be the most powerful and dependable hybrid tower system available. We employ renewable solar energy and the newest in low-emission diesel engines to present a full solution to our customers, which is delivered through HLS's unique hybrid core technology.

Future positioned.



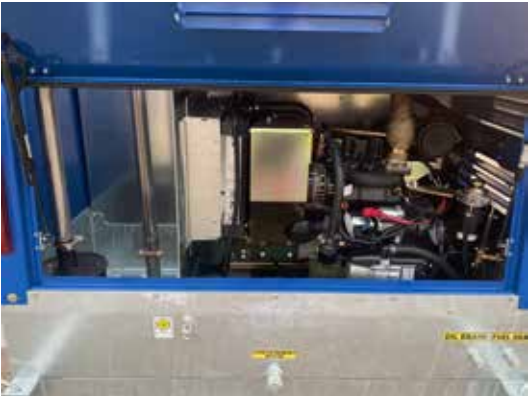
2 years warranty
BACKED BY PROFESSIONALS
Designed for long term performance and reliability.

Specifications Model 230

ENGINE	
Manufacturer	Doosan D10 Diesel or Cat C1.1
Emissions Compliance	US EPA, Environment Canada: Tier 4 Final
Starting System	12V Dedicated Battery System
Speed / Governor	Electric / 2200 RPM Max charge
Max Fuel Consumption	0.75 GPH/2.8LPH
Charge Time (20%-100%)	53 minutes
Engine Gross Power Output	17.9 kW @ 3000 RPM
Power System	
Alternator Configuration	PMG Alternator + Rectifier
Voltage	DC Nominal 48V
Standby Amperage Rating	200 amps
Continuous Amperage Rating	150 amps
Alternator IP Protection	IP 23
Battery Type	Lithium Ion - LIPO4 Chemistry
Battery Capacity	10.4 kW / 230 AH
Solar Panel Rating	600 Watts
Tower	
Type	Hydraulic first stage, cable second stages
Height	23 feet
Outriggers	5 x Outriggers with Mechanical Jack
Wind Rating	70 MPH
Fuel Capacity	65 US gallons, 245 liters
Axle	1 x 4500 lbs torsion flex
Containment System	120% Fluid Containment System
Coupling	2-5/16" ball optional pintle
Compliance	DOT and Transport Canada
DIMENSIONS	
Deployed Length / width	171" x 164" / 4343 mm x 4165 mm
Stowed Length / width	127" x 81" / 3225 mm x 2057 mm
Dry Weight (lbs/kg)	3712 lb / 1687 kg



Modern high output LED lighting packages to provide high coverage lighting in critical situations



Connected technology for performance monitoring and remote management and control

The business case for hybrid power site support equipment.



1 Fuel consumption reduction
Fuel cost reductions result in real operating cost savings over the life of the machine.



2 Emissions Reductions
Greenhouse gas reductions do not necessitate a complete revamp of your operation; we can give significant benefits with a 165 percent reduction in CO2 emissions.



3 Complement and enhance human efforts
A hybrid-based machine can help with almost any project that requires equipment. We use high-output lighting to enhance lean operations by improving safety and working conditions.

How can we drive better results? What steps can we take to improve our operational efficiency?

When it comes to site support equipment, know your return on investment. The best and only way to compare solutions is to use the big picture methodology; while up front costs and machine rent are important, don't forget that the total cost of operation is the most accurate metric.

- 1 Fuel Consumption Reduction** the HLS 230D unit is capable of reducing operating costs significantly vs. traditional light tower technology 80+% fuel consumption reduction and with added efficiencies 100+% total cost reductions possible - contact us today for a side by side comparison for your specific project
- 2 Reduce engine maintenance** to a maximum of two oil changes per year based on 24/7/365 usage
- 3 By utilizing machine automation** to improve temporary lighting, you save time and money.





NightShift Mobile - High performance mobile tower solutions.

Proven surveillance solutions
Field proven reliability



Night Shift mobile tower systems can be deployed quickly and provide long-term operation if required.

We have industry-leading control designed to manage all aspects of the machine to provide intelligent operations.

Sometimes there's a need for high-end surveillance, but only for a limited period. And sometimes, there are distant locations that need to be secured. Unfortunately, it is often too complex or expensive to install a dedicated network infrastructure for a traditional surveillance installation in both cases.

That's when our deployable solutions make a big difference. They are quick and easy to install yet offer leading-edge surveillance capabilities. Our product is smart & cost-efficient for multiple use cases

- Possible applications
- Surveillance: Public, temporary events such as election rallies, concerts, marathons or festivals, construction sites, for security purposes or to share the construction progress over the Internet, Road construction projects, where authorities need a live view for optimized traffic management, Critical infrastructure, for reliable monitoring of remote and unattended sites
 - Communication Tower: Industrial site networking

Our mobile units take up a small amount of space. They are available in several configurations, from plug-in with a backup battery to fully solar or hybrid diesel / solar power.

Designed for 24/7 surveillance operations.
Quick field setup with 15 minute deployment time.

NightShift Mobile - High performance mobile tower solutions.

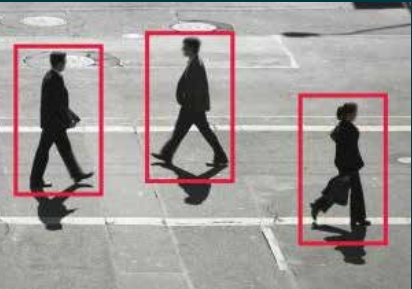


Specification Unit	Night Shift
Battery Options	Lithium Ion, AGM, Gel
Operating Temp Range	120°F to -40°F
Solar Options	600-1200 Watts
Solar Charge Controller	120v Integrated Charger, 13 Amps
Cellular Connected	HSPA/WCDMA/EDGE/GPRS
AT&T, Verizon Ready, Bell, Telus	Dual SIM Card Support
NightShift Web Based Network	Machine monitoring solutions with advanced telematic capabilities
Integrated Video Storage	Wide range of options and configurations
Motion Activated Recording	Alerts based on schedules
Camera Type Options	PTZ, Fixed , Thermal, Audible Speakers and Microphones, AC Inverter, Antennas, Weather Station, Designed to customer specification
Design Options	
Package Options	Skid, Trailer, XP Rated
Recording time in High Res	To customer requirement
Recording Quality	To customer requirement
Standard units	720P Recording, Higher Res Optional
Optional IO	Remote monitoring, lighting and other warning systems, tamper detection
High Security	VPN Ready for Data Security
Hardened Components	Customer hardware integration
Usage Alerts	Local/Remote firmware upgradable



What's under the hood matters

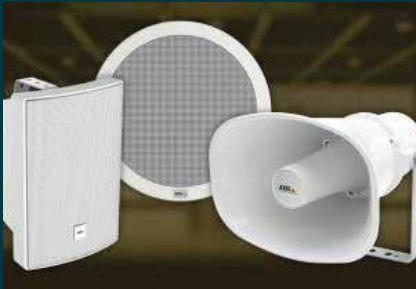
Building power systems requires a focus on utilizing a group of components to deliver maximum uptime by providing reliability and performance. Our systems are designed for tough conditions and a wide array of applications.



Analytic and other applications.
Our analytic applications enable proactive surveillance, helping your security staff protect your property by detecting and deterring crime. The applications can, for example, detect trespassers or loiterers and automatically notify a guard or play a message over a loud-speaker.



Remote management ready design
Our equipment comes ready to integrate into our customer's command and control systems, focusing on remote monitoring capabilities out of the box.



Network Audio and Recording Systems
Network audio systems are complete high-quality audio systems you can use in various situations:
Speak or Microphone options.



THE DETAILS

ST MODEL 550

High performance, our flameless indirect fired heating system provides clean, dry heat in the most demanding conditions. Our system provides industry-leading digital control designed to manage all aspects of the machine to deliver smart operation.

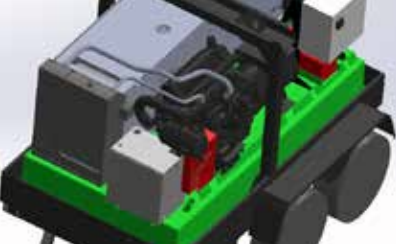
Telematic Ready.



2 years warranty
BACKED BY PROFESSIONALS
Designed for long term performance and reliability.

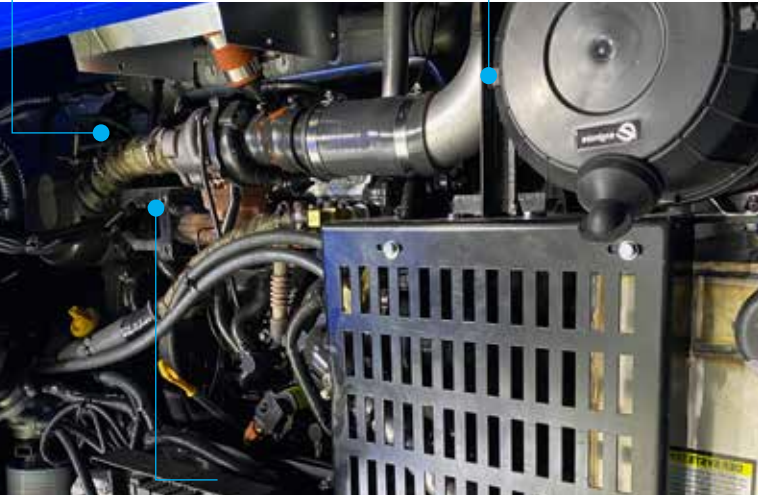
Specifications Model 550

PARAMETER	VALUE
Max Input BTU	625,500 BTU/HR
Net Output BTU	512,910 BTU/HR
Fuel Tank Capacity	375 gallon, 1417 liters
Max Temperature Rise	275°F, 135°C
Ducting Size	2 x 12" or 1 x 18"
Engine	
Model	D34T - 110HP - T4F
Total Displacement	3.4L
DEF Tank Capacity	30 Gal, 113 liters
Aspiration	Turbo/Inter-cooler
Max Operating Speed	1800 RPM
Lube Oil Capacity	12.6 quarts, 12 liters
Max Fuel Consumption	4.5 GPH, 17 LPH
Alternator	
Make	Mecc Alte
Model	ECP-32
Regulator	DSE, CSA Approved
Heating System	
Exhaust Gas Heat Exchanger	82% Efficiency
Electric Elements	Low Surface Temp Type
Electric Element Steps	3 x 20kW, 1 x 10 kW
Blower System	
Type	Backwards Inclined
CFM	4000 CFM @ 6" Static Back Pressure
Machine	
Length	180 inches
Width	91.5 inches
Weight	6851 lbs

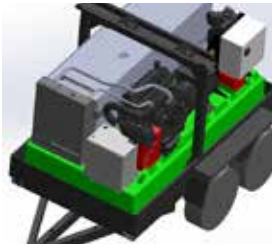


1 Designed for service
We work hard to ensure all our machines are designed in a way to make long term maintenance straightforward and efficient

2 Simple, modern control
Good controls should not only manage the process well, but they should also be easy and dependable. We strive to make advanced technologies simple to understand and utilise.



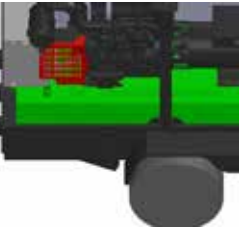
Simple design method uses proven electrical based components.



Robust design, tube steel construction,



Advanced control system that is simple to operate



110% Fluid containment, which includes external service drains for oil change



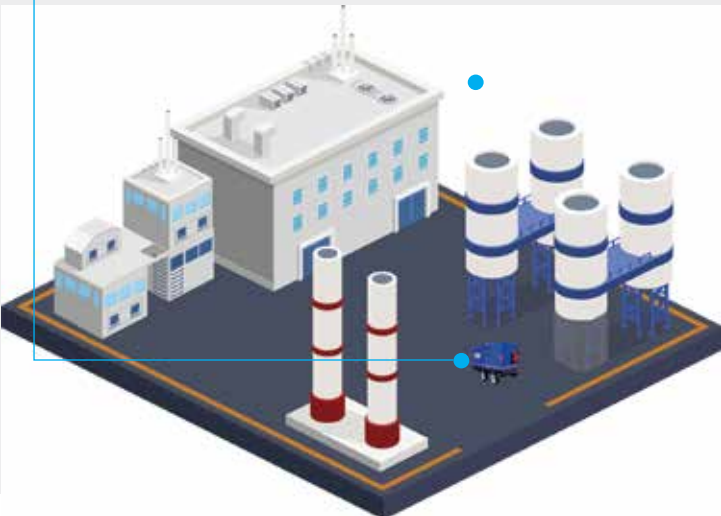
Advanced flameless heating technology.



1 Thermostat operation
To better manage the temperature of the process and reduce fuel consumption, we use remote thermostat operation.



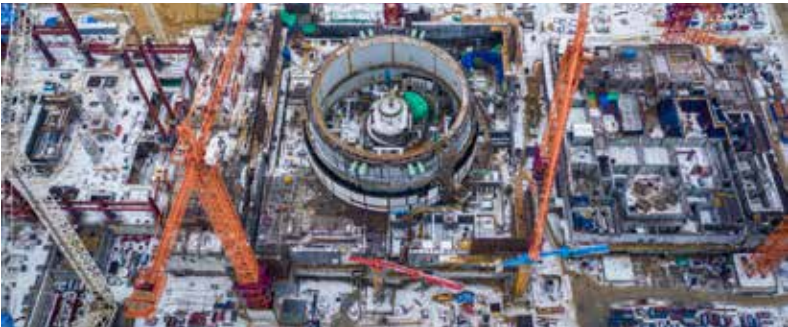
2 High Static Pressure
Our system can operate at high CFM and static pressure, giving you the freedom to deliver treated air wherever you need it.



Flameless heating technology that is both reliable and easy to use.

In most flameless heating applications there is an abundance of waste in the form of over heating. It is critical to protect certain processes from freezing during normal winter operation, however the majority of heating applications today don't use remote thermostats and on warmer days, wasting energy by over heating applications and increasing wear on machines.

- 1 Based on proven diesel engine designs. Doosan diesel engines offer proven longevity and reliability.
- 2 The integrated control system manages all aspects of machine control from a single, easy to access location—automated engine controller with integrated low fuel shutdown.
- 3 Our system sets up quickly and efficiently for customer applications. These units can deploy rapidly, quickly, and maximize safety through operational excellence.



ST MODEL 4500DF

Telematic Ready.

The Safety Thaw Model 4500DF was designed for large projects that require extremely reliable construction and make-up air heating. We provide a great option for commercial and industrial heating with our 4,500,000 BTU firing rate - this heater can handle the largest projects and provide complete temperature control during winter operation.



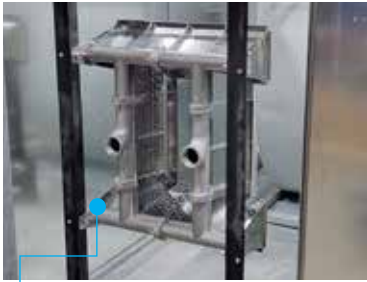
2 years warranty
BACKED BY PROFESSIONALS
Designed for long term performance and reliability.

Specifications Model 4500DF

PARAMETER	VALUE
Max Input BTU	4,500,000 BTU / HR
Fuel Gas Connection	2" NPT
Inlet Pressure Requirement	5 PSI / 35 kPa
Modulation Rate	26:1
Max Fire Rate LP	4,500,000 BTU / 48 GPH / 185 LPH
Max Fire Rate NG	4,500,000 BTU / 4368 CFH / 127 m3/hr
Fuel Compatibility	Natural or Propane Gas
Electrical System	
Voltage	460V or 600V Versions
Phase	Three
Frequency	60 HZ
Full Load Amps	23 Amps @ 480V / 19 amps @ 600V
Fan Horsepower Rating	15 HP
Blower System	
Type	Forward Curved Blower
Max Speed Operating RPM	500
Motor Speed	1800 RPM
CFM Rating	25,000 CFM @ 2" Back Pressure
Drive Type	Belt
Burner System	
Burner Management System	Siemens
Max Outlet Temperature	180 F / 82 C
Fuel	Natural Gas or Propane Switchable
Ignition Voltage	14,400v
Fuel Gas Control	Proven make up system technology
Dimensions	
Length	130"
Width	7' 1"
Height	71"
Product Standard	ANSI Z83.7 / CSA 2.14



1 Designed for reliability
We design for continual uptime since heating equipment must be ready to function in any scenario, from freezing weather to other difficult conditions.



2 Stainless Burner Head
Our modulating burner head allows you to have complete control. However, let's face it: the ambient temperature changes frequently, and the system must be prepared to respond.



Our high-volume fan can pressurize whole project sites

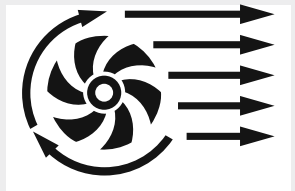


Advanced burner management with detailed fault codes



Optional VFD controller limits inrush currents and is flexible for temp power systems

Make up heating systems made for modern projects.



1 Forced mechanical ventilation
Treated air is spread throughout the construction site to heat the entire project



2 Variable control
Our technology adjusts to the ambient temperature to provide consistent heat to the project while reducing fuel use.



Temporary heating systems built to provide the highest level of uptime and dependability.

Understand your return on investment when it comes to site support equipment. The best and only lens to compare solutions is with the big picture methodology; initial cost and machine rent are essential; however, don't lose sight that the total cost of operation is the most authentic metric possible.

- 1 Our makeup air system** delivers forced mechanical ventilation to the project site, allowing treated air to circulate throughout it.
- 2 Our system** raises the surface temperature of curing construction materials to speed up and optimize the curing process while still protecting quality.
- 3 Manage site humidity** by providing treated air; we can control site humidity with pressurization to speed up cure periods and limit the risk of mould.





HYBRIDLIGHT
SOLUTIONS LLC.

SAFETY THAW
DESIGNED FOR RUGGED CONDITIONS

Technology for modern operations.

Site support equipment designed to bring solutions to the table in the form of efficiency and performance built with attention to detail.



Contact

Direct: 1-218-568-1188
E-mail: info@hybridlightsolutions.com

HQ and Manufacturing

Hybrid Light Solutions LLC.
4604 Morehouse Drive
Pequot Lakes, Minnesota
56472



Contact us today, we are excited to learn more about your application.

www.hybridlightsolutions.com

www.safetythaw.com